



A CHRISTMAS CAROL

By Charles Dickens

Adapted by Sandra Deer Directed by Kenny Leon
November 24 – December 26, 1993

SPONSORED BY
EQUIFAX
DEAN WITTER



KENNY LEON
Artistic Director

EDITH H. LOVE
Managing Director

presents

CHARLES DICKENS' A CHRISTMAS CAROL

Adapted by
SANDRA DEER

Directed by
KENNY LEON

Set Design by
DEX EDWARDS

Costume Design by
JEFF CONE

Lighting Design by
P. HAMILTON SHINN

Composer
DWIGHT ANDREWS

Casting
JODY FELDMAN

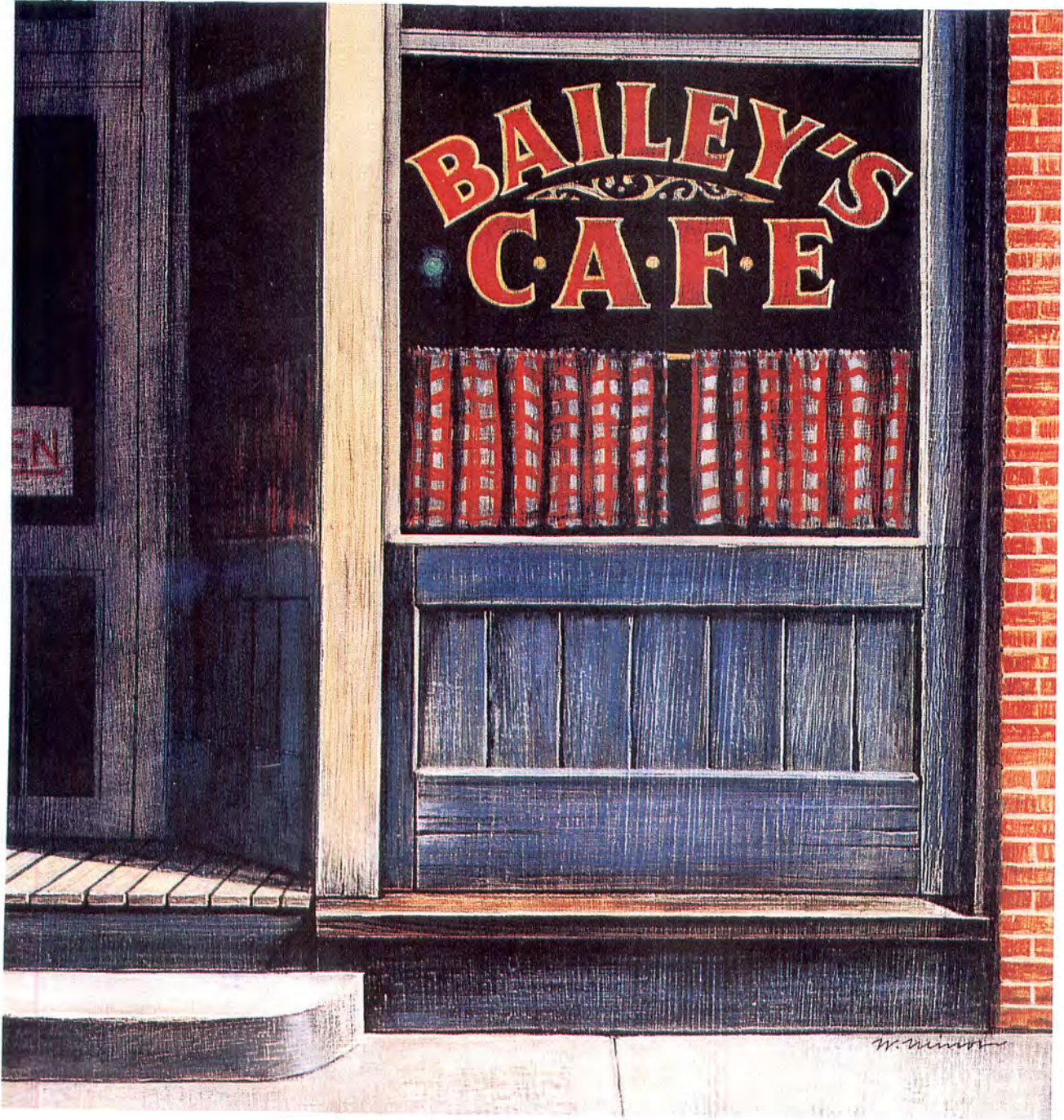
Stage Manager
JOHN W. CALDER III

Co-Sponsored by

EQUIFAX
DEAN WITTER



HartfordStage.



March 26 - April 30, 1994

BAILEY'S ® **CAFE**

Bailey's Cafe

By Gloria Naylor

Director - Novella Nelson

Set Design - Marina Draghici

Costume Design - Gabriel Berry

Lighting Design - Jennifer Tipton

Original Music - Dwight Andrews

Sound Design - David Budries

Projections Design - Laura Nordman

Dramaturg - Kim Euell

Production Stage Manager - Deborah Vandergrift

Assistant Stage Manager - Barbara Reo

Casting - Ellen Novack, C.S.A.

HartfordStage.

Mark Lamos, Artistic Director

Stephen J. Albert, Managing Director

This production is sponsored by Fleet Bank.

**Yale
Repertory
Theatre**

Lloyd Richards
Artistic Director

presents
the World Premiere of

FENCES

by
August Wilson

Set Design Costume Design Light Design
James D. Sandefur **Candice Donnelly** **Danianne Mizzy**

Director
Lloyd Richards

April 30 - May 25, 1985

Fences was initially presented as a staged reading at the Eugene O'Neill Theater Center's 1983 National Playwrights Conference

With the premiere of *Fences*, the *Lucille Lortel Fund For New Drama At Yale* begins its program of support for the presentation of new plays at the Yale Rep. We acknowledge with gratitude this important contribution to the American theatre.

The Yale Repertory Theatre gratefully acknowledges the support of the National Endowment for the Arts, a federal agency, and the Connecticut Commission on the Arts. The Yale Repertory Theatre is a constituent of the Theatre Communications Group, the national service organization of non-profit professional theatres, and is a member of the League of Resident Theatres, the American Arts Alliance, and Connecticut Advocates for the Arts.

CAST

(in order of appearance)

Troy Maxson	James Earl Jones
Jim Bono, Troy's friend	Ray Aranha
Rose, Troy's wife	Mary Alice
Lyons, Troy's oldest son by previous marriage	Charles Brown
Gabriel, Troy's brother	Russell Costen
Cory, Troy and Rose's son	Courtney B. Vance
Raynell, Troy's daughter	Cristal Coleman* LaJara Henderson*

*Miss Coleman and Miss Henderson will play the role of Raynell at alternate performances.

The play is set in the front yard of the Maxson house, itself in an urban neighborhood of a northern American industrial city.

Act I: Fall, 1957
Act II, Scene 1: Fall, 1957
Act II, Scenes 2-4: Spring, 1958
Act II, Scene 5: Summer, 1965

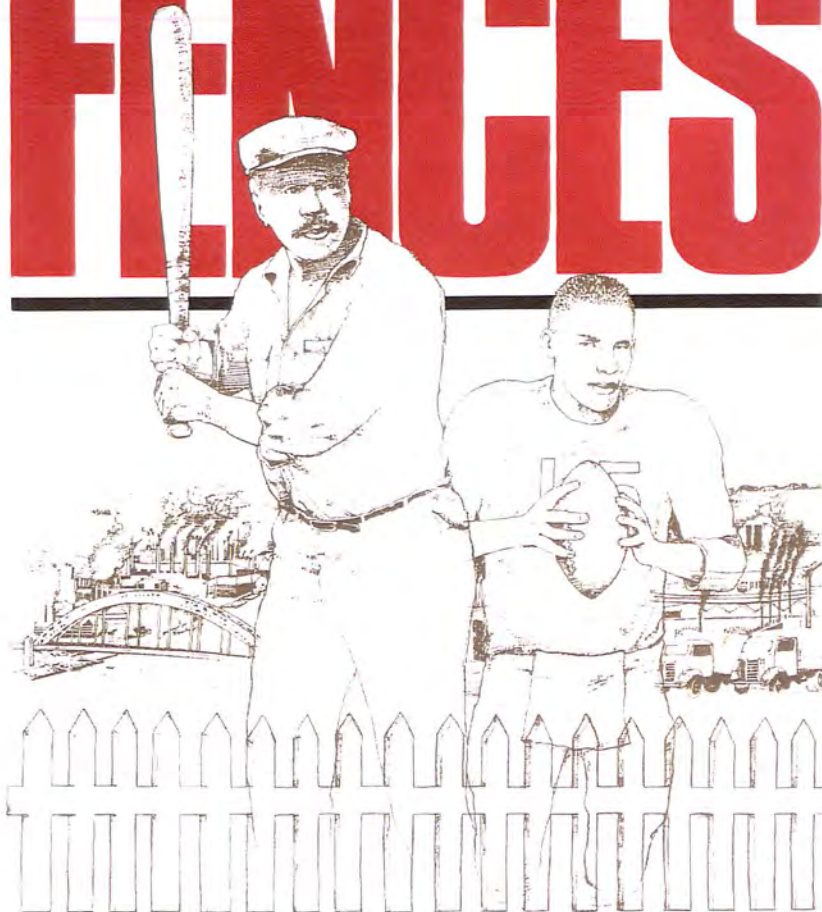
**There will be one intermission
between acts.**

Musical Director: **Dwight Andrews**
Production Stage Manager: **Joel Grynhelm**
Stage Manager: **Terrence J. Witter**

Casting by **Meg Simon/Fran Kumin**

Special Thanks: Keith Wiarda of the New York Yankees; City of Pittsburgh Refuse Department; Rena Shapiro; Conte Arts Magnet School; Sharyn Esdaille; Howard Nobleman of Towers Pharmacy; Chris Taylor; Banko's House of Music; Phil Warosek, United Illuminating; Hilltop Orchards of Branford; East Coast Fence. Photographers: William B. Carter, Paul J. Penders. Graphic Designer: Anne Dutlinger.

FENCES



BY AUGUST WILSON

Underwritten by a grant from  **Equibank**
Member FDIC



Pittsburgh Public Theater

FOURTEENTH SEASON 1988-89

William T. Gardner
Producing Director

Dan Fallon
Managing Director

present

FENCES BY AUGUST WILSON

DIRECTED BY CLAUDE PURDY

featuring

TRAZANA BEVERLEY
DI RAY JAMES
MONTÉ RUSSELL

JEWEL BURGESS
WILLIAM JAY

ROBERT GOSSETT
JOHN HENRY REDWOOD
WALLY TAYLOR

Scenic Design by
JAMES D. SANDEFUR

Costume Design by
MARY MEASE WARREN

Lighting Design by
PHIL MONAT

Musical Design by
DWIGHT D. ANDREWS

Sound Design by
MARTIN CHRISTOFFEL

Production Stage Manager
JANE ROTHMAN

Casting by JOSEPH ABALDO

May 23 - July 2, 1989

at the
Theodore L. Hazlett, Jr. Theatre

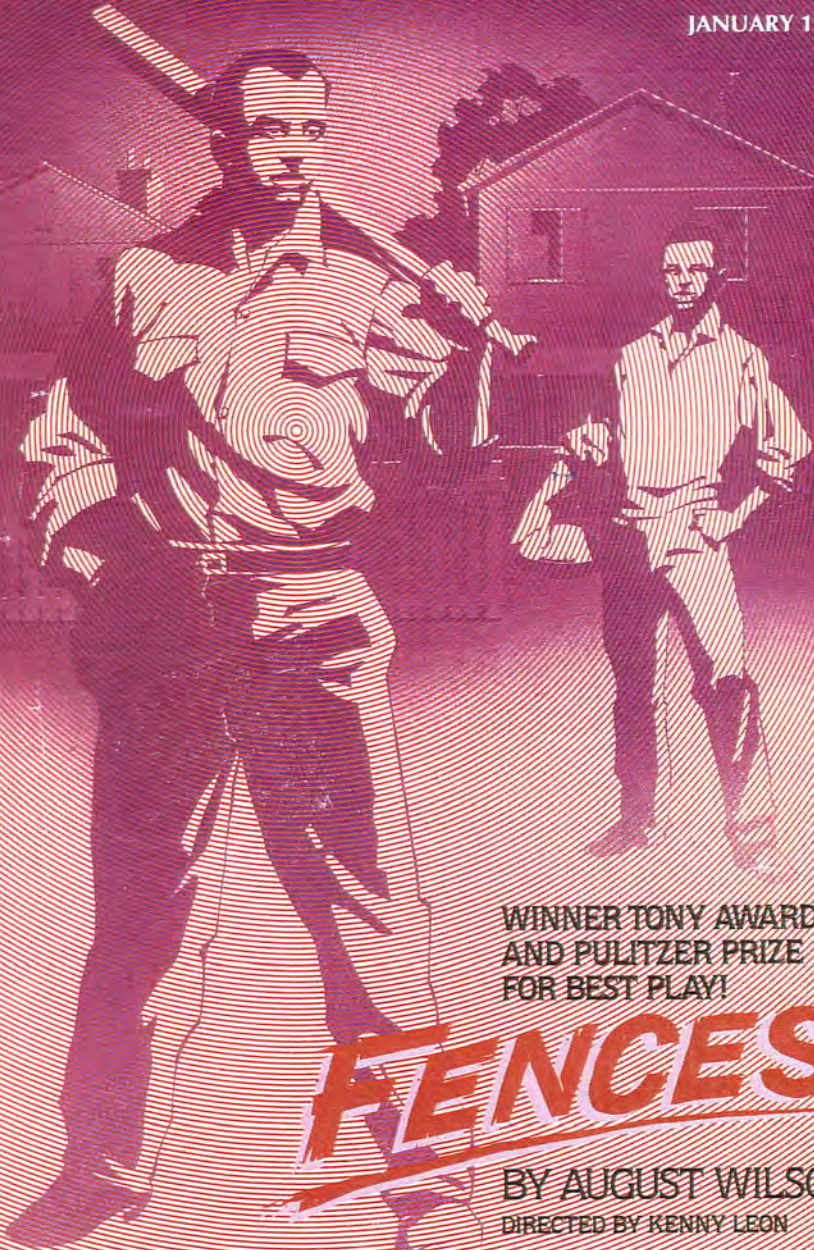
Fences was initially presented as a staged reading at the Eugene O'Neill Theater Center's 1983 National Playwright's Conference. The play opened on April 30, 1985 at the Yale Repertory Theatre in New Haven, Connecticut, and on Broadway on March 26, 1987, at the 46th Street Theatre.

Atlanta Arts

THE ALLIANCE MAINSTAGE

THE MONTHLY MAGAZINE OF THE ROBERT W. WOODRUFF ARTS CENTER

JANUARY 1990



WINNER TONY AWARD
AND PULITZER PRIZE
FOR BEST PLAY!

FENCES

BY AUGUST WILSON

DIRECTED BY KENNY LEON

JANUARY 6 - FEBRUARY 18, 1990

Sponsored by



ROBERT J. FARLEY
Artistic Director

EDITH H. LOVE
Managing Director

present

FENCES

by

AUGUST WILSON

Directed by

KENNY LEON

Set Design by
MICHAEL OLICH

Costume Design by
SUSAN E. MICKEY

Lighting Design by
ANN G. WRIGHTSTON

Original Music by
DWIGHT ANDREWS

Casting by
JAY BINDER
ADAM MUZZY

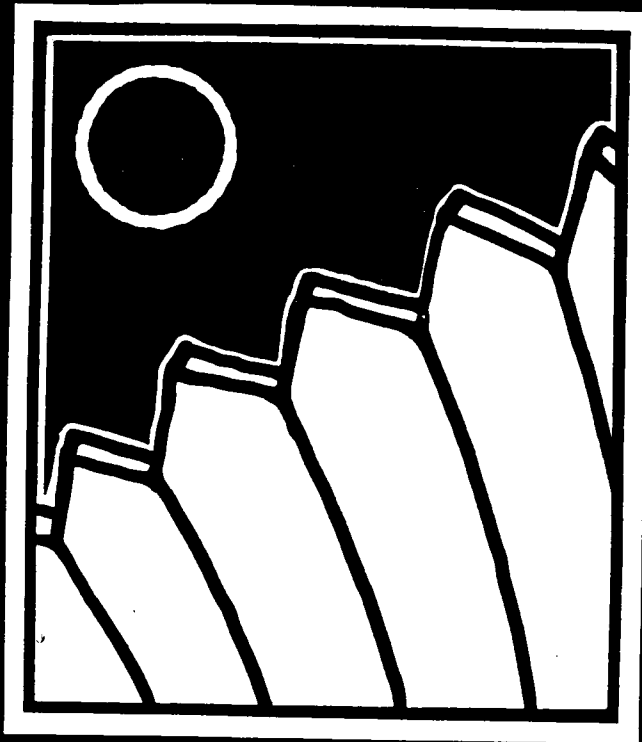
Stage Manager
JULIE A. RICHARDSON

Sponsored by



Produced by special arrangement with Samuel Fench, Inc.

THEATREWORKS / UCCS
PRESENTS



AUGUST WILSON'S
PULITZER PRIZE WINNING

FENCES

FRIDAYS & SATURDAYS MAY 14 - JUNE 5 at 8:00 PM

SUNDAY MATINEE - MAY 30 at 2:00 PM

DWIRE ARENA THEATRE - UCCS

RESERVATIONS WITH VISA & MASTERCARD - 593.3232

TICKETS ALSO AVAILABLE at KRCC, TAYLOR TRAVEL BRIARGATE

AND THE UCCS UNIVERSITY CENTER

GROUP RATES AVAILABLE

DIRECTED BY BOB PINNEY
SETTING BY STEPHEN GRAYBILL
LIGHTING BY SHERRI BRISTOL
COSTUMES BY BASIA GRABOWSKI & EVE TILLEY
SOUND BY RANDY TODDISH
MUSIC ARRANGED BY DWIGHT ANDREWS
PRODUCING DIRECTOR - WHIT ANDREWS

Production Staff

Stage Manager/
Assistant Director.....Betty Stafford
Production Coordinator.....Marge Patterson
Assistant Stage Manager.....Jason Willard
Assistant Set Designer.....Peter Maurelli
Lighting Technician.....Patrick Stapleton
Sound Technician.....Randy Toddish
Publicity.....Barbara Stafford
Production Crew.....Mike Lamle
Mike Morgan
Scott Sweet
Barbara Trivelli
Properties.....Marge Patterson
Photography.....Bob Patterson
Greg Worthen
House Manager.....Marge Patterson

* * * * *

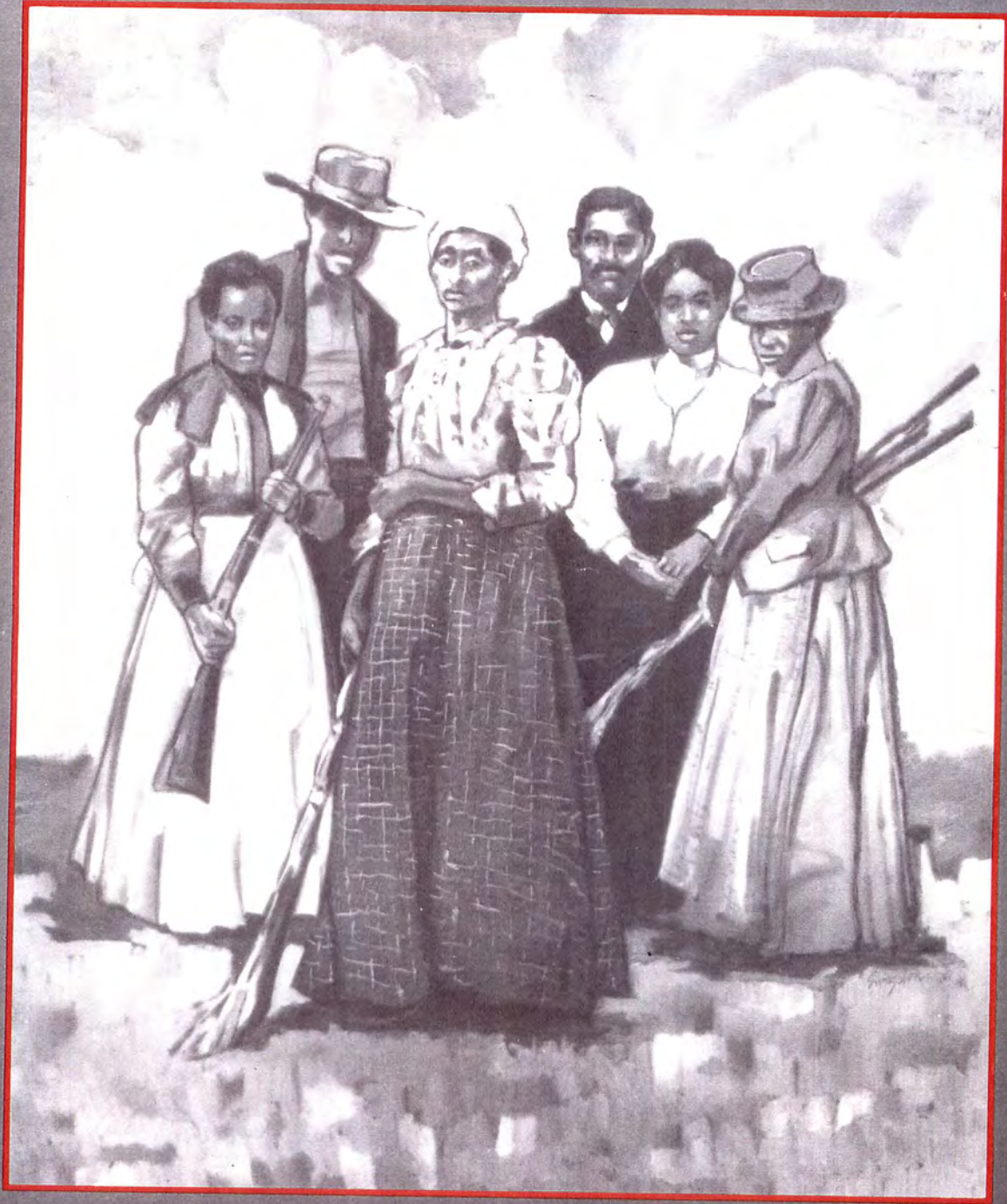
SPECIAL THANKS TO: Goodwill Industries, Louis Janec, Barbara Trivelli, Glen's Army Surplus, Play It Again Sports, Sharon Andrews, Jesse Andrews, Albertson's, Flower Cart, Bill Maxedon, Tom Paradise, UCCS Media Center, UCCS Department of Public Safety, UCCS Physical Plant, Dr. James A. Null, Bob Patterson, Jennifer Sapp, David Justice, Eve Tilley.

* * * * *

THEATREWORKS' 1993/1994 Season is supported, in part, by a grant from the Colorado Council on the Arts, a state agency.

* * * * *

Please, no smoking, cameras or recording devices in the theatre.



FLYIN' WEST

**LONG WHARF THEATRE
BOARD OF TRUSTEES**

Chairman:
Fred E. Walker

Vice Presidents:
Albert P. Lehman
Barbara L. Pearce

Treasurer:
Sylvia V.S. Abbate

Secretary:
Joan G. Miller

Chairman Emeritus:
C. Newton Schenck

Lane Ameen
Joseph D. Crowley
William E. Curran
Milton P. DeVane
Louise Endel
Irwin Engelman
Richard A. Ferguson
Joy Flink
Maureen Gorman
Andrew J. Graham
Richard J. Grossi
William H. Hackett
Jean M. Handley
Betsy Henley-Cohn
Virginia M. Hepler
Christine H. Hutchison
Gilbert Kenna
Charles C. Kingsley
Elizabeth B. Kubler
John S. Lapidés
Ruth Lord
Gary MacElhiney
Marguerite McCraven
Jerome Meyer
Saul S. Milles
Steven E. Permut
Harold Roth
Shirlee-Ann Schaffer
Alan I. Scheer
Carol T. Schreiber
Joshua A.S. Young

*President, The Guild at
Long Wharf Theatre:*
Louise Dimond

*Wharf Rats Steering
Committee Chairman:*
Edward Bottomley

Corporate Council:
Frank P. Doyle
Peter Goldberg
F. Patrick McFadden, Jr.
Walter J. Monteith, Jr.
William J. Rush
Robert M. Schneider

*Board Liaison to National
Corporate Theatre Fund:*
Irwin Engelman

LONG WHARF THEATRE

The Newton Schenck Stage
PRESENTS

The Alliance Theatre/Indiana Repertory Theatre
production of

**FLYIN'
WEST**

by

PEARL CLEAGE

directed by
KENNY LEON

set design by
DEX EDWARDS

costume design by
JEFF CONE

lighting design by
ANN G. WRIGHTSON

original music by
DWIGHT ANDREWS

production stage manager
RICHARD FELDMAN

MAY 17 - JUNE 26, 1994

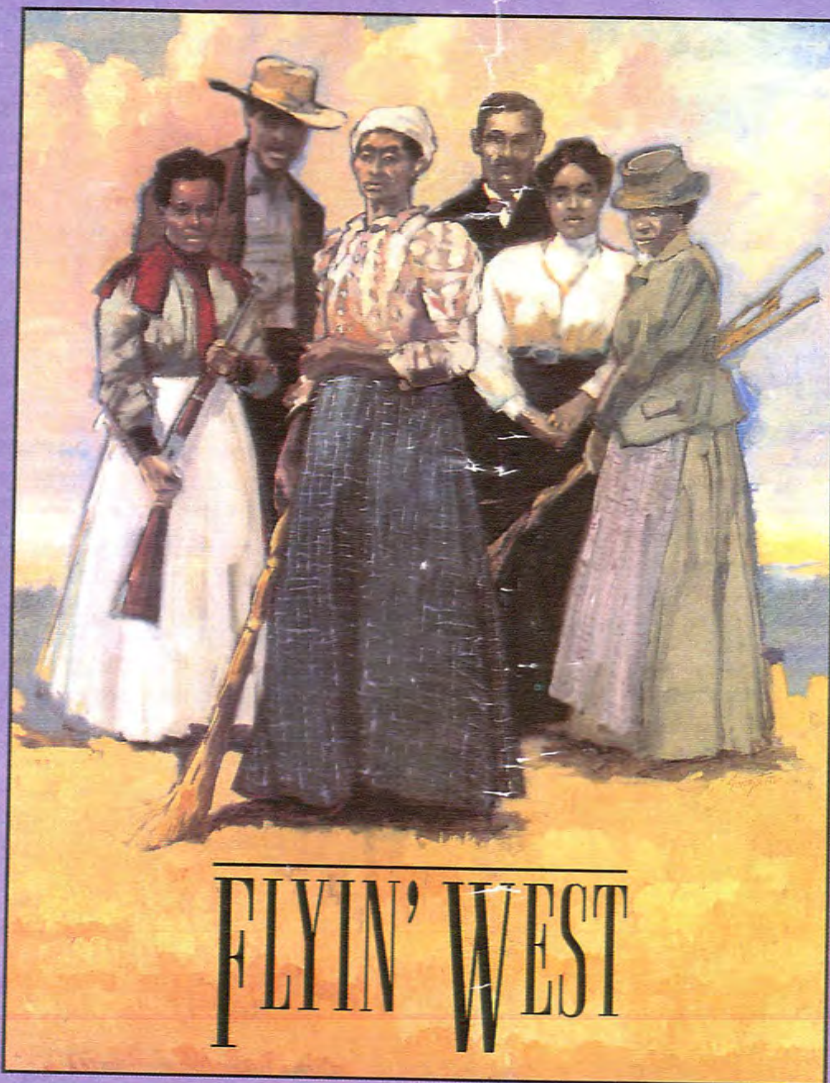
ARVIN BROWN - Artistic Director
M. EDGAR ROSENBLUM - Executive Director

Atlanta Arts

1992

THE MONTHLY MAGAZINE OF THE ROBERT W. WOODRUFF ARTS CENTER

THE ALLIANCE THEATRE
IN ASSOCIATION WITH *AT&T: OnStage*[®]
PRESENTS THE WORLD PREMIERE OF



FLYIN' WEST

BY PEARL CLEAGE
DIRECTED BY KENNY LEON



Alliance Theatre in association with
AT&T: OnStage[®]
presents

FLYIN' WEST

by
PEARL CLEAGE

Directed by
KENNY LEON

Set Design by
DEX EDWARDS

Costume Design by
JEFF CONE

Lighting Design by
P. HAMILTON SHINN

Original Music Composed by
DWIGHT ANDREWS

Casting
JAY BINDER

Stage Manager
RICHARD FELDMAN

Artistic Director
KENNY LEON

Managing Director
EDITH H. LOVE

Flyin' West was selected through
"The AT&T New Plays for the Nineties Project."



From the Mississippi Delta



The Professional Theatre in Residence at Boston University

Peter Altman
Producing Director

Michael Maso
Managing Director

presents

From the Mississippi Delta

by

Dr. Endesha Ida Mae Holland

Directed by
Kenny Leon

Scenery designed by
Marjorie Bradley Kellogg

Costumes designed by
Susan E. Mickey

Lighting designed by
Ann G. Wrightson

Music Director and Composer
Dwight D. Andrews

Casting Consultants
Jay Binder Associates

Production Dramaturg
Jayne Koszyn

Production Stage Manager
Jennifer Lynn Brown

Assistant Stage Manager
Timothy J. Smith



This production is made possible in part by a grant from AT&T

Originally produced on the New York stage by Susan Quint Gallin, Calvin Skaggs, Susan Wexler, Judith Resnick and Oprah Winfrey.

A one-act version of the play was originally produced in Buffalo, New York by the Ujima Theatre Company, Lorna C. Hill, Artistic Director and subsequently in New York City by the New Federal Theatre, Woodie King, Jr., Artistic Director.

September 10 - October 10, 1993

Boston University Theatre, 264 Huntington Avenue, Boston, MA 02115

The Heliotrope Bouquet By Scott Joplin & Louis Chauvin

BY ERIC OVERMYER



FEBRUARY 16-APRIL 7, 1991

THE HEAD THEATER

CenterStage

THE HEAD THEATER
CENTER STAGE

in association with *AT&T OnStage*[®]

presents

**The Heliotrope Bouquet By
Scott Joplin & Louis Chauvin**

by **Eric Overmyer**

<i>Director</i>	Stan Wojewodski, Jr.
<i>Set Design</i>	Christopher Barreca
<i>Costume Design</i>	Catherine Zuber
<i>Lighting Design</i>	Richard Pilbrow
<i>Sound Design</i>	Janet Kalas
<i>Music Director</i>	Dwight Andrews
<i>Choreographer</i>	Donald Byrd
<i>Dramaturgs</i>	Mona Heinze
	James Magruder
<i>Recorded Pianist</i>	William Ransom

This play is dedicated by the author to Stan Wojewodski, Jr.

Produced in collaboration with La Jolla Playhouse, La Jolla, California.

The W. Alton Jones Foundation through its New American Plays program awarded Center Stage a grant for the development and production of *The Heliotrope Bouquet By Scott Joplin & Louis Chauvin*.

The play was selected through "The AT&T New Plays for the Nineties Project."

Ellen Novack, C.S.A., Casting Consultant

1990/91 SEASON

HONORED AS THE STATE THEATER OF MARYLAND

Stan Wojewodski, Jr.	<i>Artistic Director</i>
Peter W. Culman	<i>Managing Director</i>

PERFORMING ARTS

AUGUST 1991

The Regard of Flight

The Heliotrope
Bouquet by Scott Joplin
& Louis Chauvin

A Lesson from Aloes

LA JOLLA

Mandell Weiss Center



PLAYHOUSE

for the Performing Arts



LA JOLLA PLAYHOUSE

La Jolla Playhouse

in association with **AT&T: OnStage®**

presents

THE HELIOTROPE BOUQUET BY SCOTT JOPLIN & LOUIS CHAUVIN

by Eric Overmyer

Directed by Stan Wojewodski Jr.
Set Designer Christopher Barreca
Costume Designer Catherine Zuber
Lighting Designer Richard Pilbrow
Sound Designer Janet Kalas
Music Director Dwight Andrews
Choreographer Donald Byrd
Dramaturgs James Magruder, Mona Heinze

with

Ellen M. Bethea Linda Cavell SaMi Chester
John Cothran Jr. Denise Diggs Judyann Elder June Jones
Victor Mack Robert A. Owens F. William Parker Keith Randolph Smith

Stage Manager Julie Thompson

Produced in collaboration with Center Stage, Baltimore, Maryland

The play was selected through "The AT&T New Plays for the Nineties Project"

Artistic Director Des McAnuff
Managing Director Alan Levey
Associate Director/Dramaturge Robert Blacker

West Coast Casting
Pagano/Bialy/Manwiller/Margiotta

East Coast Casting
Ellen Novack, C.S.A.

Mandell Weiss Forum
August 6 - September 15, 1991

Yale Repertory Theatre



Joe Turner's Come and Gone

Yale Repertory Theatre

Lloyd Richards, Artistic Director

Joe Turner's Come and Gone
by August Wilson

Directed by Lloyd Richards

Setting by
Scott Bradley

Costumes by
Pamela Peterson

Lighting by
Michael Giannitti

Musical Direction by
Dwight Andrews

Sound Design by
Mathew Wiener

April 29 - May 24, 1986

Joe Turner's Come And Gone was initially presented as a staged reading at the Eugene O'Neill Theater Center's 1984 National Playwrights Conference.

The **Yale Repertory Theatre** acknowledges with gratitude special support from the *Lucille Lortel Fund For New Drama At Yale* which greatly assisted the production of JOE TURNER'S COME AND GONE.

The **Yale Repertory Theatre** gratefully acknowledges the support of the *National Endowment for the Arts*, a federal agency, and the *Connecticut Commission on the Arts*. The *Yale Repertory Theatre* is a constituent of the *Theatre Communications Group*, the national service organization of non-profit professional theatres, and is a member of the *League of Resident Theatres*, the *American Arts Alliance*, and *Connecticut Advocates for the Arts*.

PLAYBILL®

ETHEL BARRYMORE THEATRE

JOE TURNER'S COME AND GONE



OPENING NIGHT: MARCH 27, 1988

ETHEL BARRYMORE THEATRE

A Shubert Organization Theatre
Gerald Schoenfeld, *Chairman*

Bernard B. Jacobs, *President*

Elliot Martin and Vy Higginsen/Ken Wydro

in association with

The Yale Repertory Theatre

present

JOE TURNER'S COME AND GONE

by

AUGUST WILSON

Featuring

Kimberleigh Aarn Angela Bassett L. Scott Caldwell
Richard Parnell Habersham Ed Hall Delroy Lindo Jamila Perry
Bo Rucker Raynor Scheine Kimberly Scott Mel Winkler

Scenery by Scott Bradley Costumes by Pamela Peterson Lighting by Michael Giannitti
Music Direction by Dwight Andrews Casting by Meg Simon & Fran Kumin Production Stage Manager Karen L. Carpenter

Associate Producers

Jeffrey Steiner Kery Davis Charles Grantham

Directed by

LLOYD RICHARDS

World Premiere—Yale Repertory Theatre
Lloyd Richards, Artistic Director Benjamin Mordecai, Managing Director

Second Production—Huntington Theatre Company
Peter Altman, Producing Director Michael Maso, Managing Director

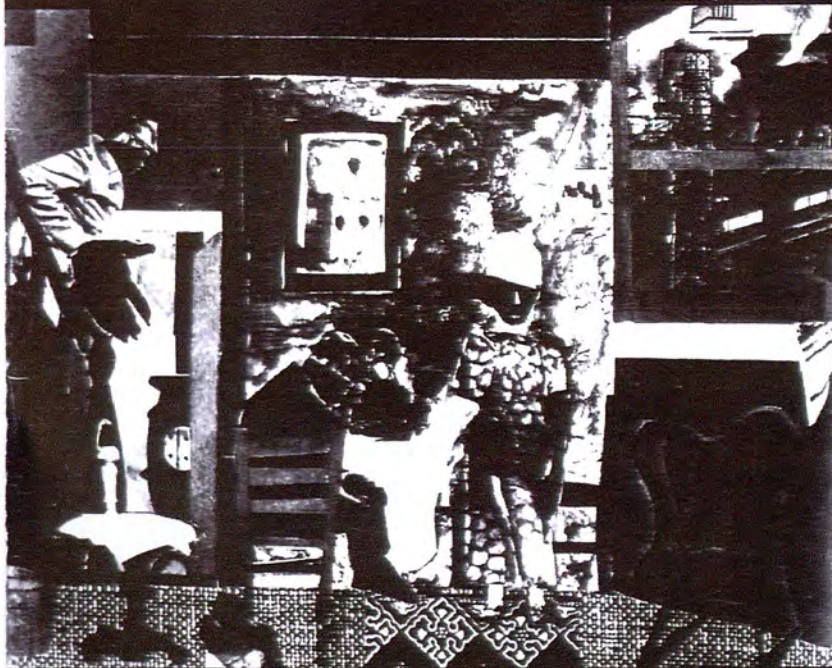
Originally presented as a staged reading at the 1984 National Playwright's conference
at The Eugene O'Neill Theater Center.

British Premiere

JOE TURNER'S COME AND GONE

by August Wilson

The Mill Hand's Lunch Bucket by Romare Bearden



TRICYCLE
theatre

JOE TURNER'S COME AND GONE

by August Wilson

CAST IN ORDER OF APPEARANCE

Seth Holly
Bertha Holly
Bynum Walker
Rutherford Selig
Jeremy Furlow
Herald Loomis
Zonia Loomis
Mattie Campbell
Reuben Mercer
Molly Cunningham
Martha Pentecost

Al Matthews
Dona Croll
Joseph Marcell
Jack Chissick
Chris Tajah
Tony Armatrading
Nadine Marshall
} or **Tracey Thompson**
Yvonne French
} **Colin Glen**
} or **Myron McKay**
Caroline Lee Johnson
Claudette Williams

Director **Claude Purdy**

Set Designer **Adrienne Lobel**

Costume Designer **Poppy Mitchell**

Lighting Designer **Ace McCarron**

Assistant Director **C. Rosalind Bell**

Original music composed by **Dwight Andrews**

Production Manager **Jonathan Bartlett**

Company Stage Manager **Emma Bingham**

Deputy Stage Manager **Mark Shayle**

Assistant Stage Manager **Reg Liverpool**

Wardrobe Supervisor **Binnie Bowerman**

Wardrobe Assistant **Bonnie Clarke**

Set constructed by **Forbes Nelson**

Set painted by **Wayne Glaze and Yvette Pilsbury**

- ACT 1: Scene 1 A boarding-house in Pittsburgh, 1911
Scene 2 Saturday morning, a week later
Scene 3 The next day
Scene 4 Later the same evening
- ACT 2: Scene 1 The following morning
Scene 2 Early the next morning
Scene 3 Later the same day
Scene 4 The following morning
Scene 5 The following Saturday

There will be an interval

Colin Glen, Nadine Marshall, Myron McKay and Tracy Thompson all trained at the Anna Scher Theatre.

No smoking or drinking in the auditorium please

Photography and audio or video recording are prohibited during the performance.

In the interests of other patrons, will you please ensure that watch alarms and paging devices are switched off.
In accordance with requirements of the London Borough of Brent, persons shall not be permitted to stand or sit in any gangways intersecting the seating.

We hope that you enjoy your visit to the Tricycle Theatre. If you have any queries or suggestions, please ask for the House Manager.



Atlanta Arts

THE ALLIANCE MAIN STAGE

THE MONTHLY MAGAZINE OF THE ROBERT W. WOODRUFF ARTS CENTER

JANUARY 1989



JOE TURNER'S COME AND GONE by August Wilson

Winner Best Play New York Drama Critics.

Directed by Kenny Leon

January 25 - February 25, 1989



ROBERT J. FARLEY

Artistic Director

EDITH H. LOVE

Managing Director

present

JOE TURNER'S COME AND GONE

by

AUGUST WILSON

Directed by
KENNY LEON

Set Designer
MICHAEL OLICH

Costume Designer
SUSAN E. MICKEY

Lighting Designer
ANN G. WRIGHTSON

*Musical Direction and
Original Music by*
DWIGHT ANDREWS

Casting by
JAY BINDER
ADAM MUZZY

Production Stage Manager
MICHAEL B. PAUL

Sponsored by



Produced by special arrangement with Samuel French, Inc.

San Francisco
PERFORMING ARTS

JANUARY 1989



Shirley Arden

A.C.T.

AMERICAN CONSERVATORY THEATRE • 1988-89 SEASON

and

THE LOS ANGELES THEATRE CENTER

in association with

LORRAINE HANSBERRY THEATRE

present

JOE TURNER'S COME AND GONE

(1985)

by AUGUST WILSON

Directed by Claude Purdy
Scenery by Scott Bradley
Original Costumes by Pamela Peterson
Costumes remounted by David F. Draper
Musical Direction Dwight D. Andrews
Lighting by Derek Duarte
Sound by Stephen LeGrand
Wigs and Hair by Rick Echols
Juba Dance staged by Halifu Osumare
Associate Director Stanley E. Williams

Cast

(in order of appearance)

Seth Holly Steven Anthony Jones
Bertha Holly Delores Mitchell
Bynum Walker Roscoe Lee Browne
Rutherford Selig Scott Freeman
Jeremy Furlow Mark Daniel Cade
Herald Loomis James Craven
Zonia Loomis Amber Russ
Mattie Campbell Kimberley LaMarque
Reuben Scott Taalib-Din Shakir
Molly Cunningham Anna Deavere Smith
Martha Pentecost Adilah Barnes

The Scene: A boardinghouse in Pittsburgh. August, 1911.

There will be one intermission.

Understudies

Bertha Holly — Adilah Barnes; *Mattie Campbell, Molly Cunningham, Martha Pentecost* — Dawna Bailey;
Seth Holly, Bynum Walker, Jeremy Furlow, Herald Loomis — Garland Simpson;
Zonia Loomis — Asha Robinson; *Rutherford Selig* — Howard Swain.

Stage Manager: Alice Elliott Smith
 Assistant to the Director: C. Rosalind Bell

**Yale
Repertory
Theatre**



**Yale
Repertory
Theatre**

Lloyd Richards
Artistic Director

presents
The World Premiere Of

Ma Rainey's Black Bottom

by
August Wilson

Costumes by **Daphne Pascucci** Settings by **Charles Henry McClennahan** Lighting by **Peter Maradudin**

Music Direction by
Dwight Andrews

Directed by
Lloyd Richards

April 3 - April 21, 1984

Ma Rainey's Black Bottom was initially presented as a staged reading at the Eugene O'Neill Theater Center's 1982 National Playwrights Conference.

The Yale Repertory Theatre gratefully acknowledges the support of the National Endowment for the Arts, a federal agency, and the Connecticut Commission on the Arts. The Yale Repertory Theatre is a constituent of the Theatre Communications Group, the national service organization of non-profit professional theatres, and is a member of the League of Resident Theatres, the American Arts Alliance, and Connecticut Advocates for the Arts.

PLAYBILL®

CORT THEATRE

Ma Rainey's Black Bottom



CORT THEATRE

A Shubert Organization Theatre

Gerald Schoenfeld, *Chairman*

Bernard B. Jacobs, *President*

Ivan Bloch Robert Cole Frederick M. Zollo
present

The Yale Repertory Theatre production of

Ma Rainey's Black Bottom

by August Wilson

Starring

Charles S. Dutton Leonard Jackson Robert Judd Joe Seneca
Lou Criscuolo John Carpenter Aleta Mitchell Scott Davenport-Richards Christopher Loomis

and

Theresa Merritt

Costumes by Daphne Pascucci Setting by Charles Henry McClennahan Lighting by Peter Maradudin Musical Direction by Dwight Andrews

Sound by Jan Nebozenko Casting by Meg Simon/Fran Kumin General Management Kingwill & Goossen Production Stage Manager Mortimer Halpern

Associate Producers

Bart Berman Hart Productions William P. Suter

Directed by

Lloyd Richards

Ma Rainey's Black Bottom was initially presented as a staged reading at the Eugene O'Neill Theatre Center's 1982 National Playwrights' Conference.

The Producers and Theatre Management are Members of the
League of New York Theatres and Producers, Inc.

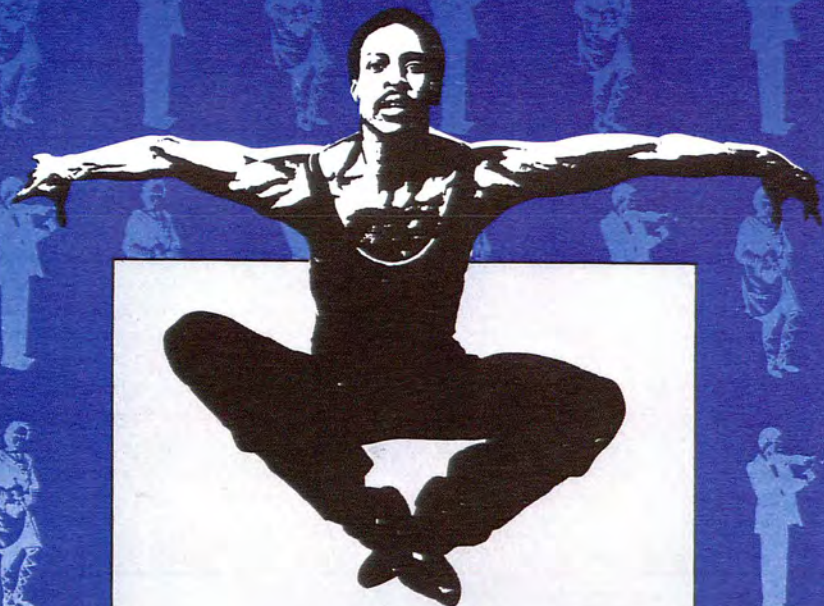
Beefeater® Gin.

The Crown Jewel of England.™

IMPORTED FROM ENGLAND BY KOBRAND CORP., N.Y., N.Y. 94 PROOF. 100% GRAIN NEUTRAL SPIRITS.

OCTOBER 15, 1984

THE GEORGE BISHOP
LANE
S·E·R·I·E·S



The Lane Series

presents

Yale Repertory Theatre's
world premiere production of

Ma Rainey's Black Bottom

by

August Wilson

Lloyd Richards
Artistic Director

costumes by
Daphne Pascucci

settings by
**Charles Henry
McClennahan**

lighting by
Peter Maradudin

music direction by
Dwight Andrews

Directed by
Lloyd Richards

Tues

April 24

Flynn

August Wilson's MA RAINEY'S



BLACK BOTTOM

Directed by Dwight Andrews

23 April -
2 June 1991

Alliance Theatre
Woodruff Arts Center
For Tickets Call
404/892.2414



Photo: © 1991 Alliance Theatre



KENNY LEON
Artistic Director

EDITH H. LOVE
Managing Director

presents

AUGUST WILSON'S MA RAINEY'S BLACK BOTTOM

Directed by
DWIGHT ANDREWS

Set Design by
MICHAEL OLICH

Costume Design by
SUSAN E. MICKEY

Lighting Design by
ANN G. WRIGHTSON

Musical Direction by
DWIGHT ANDREWS

Casting
JAY BINDER
ADAM MUZZY

Production Stage Manager
PAT A. FLORA

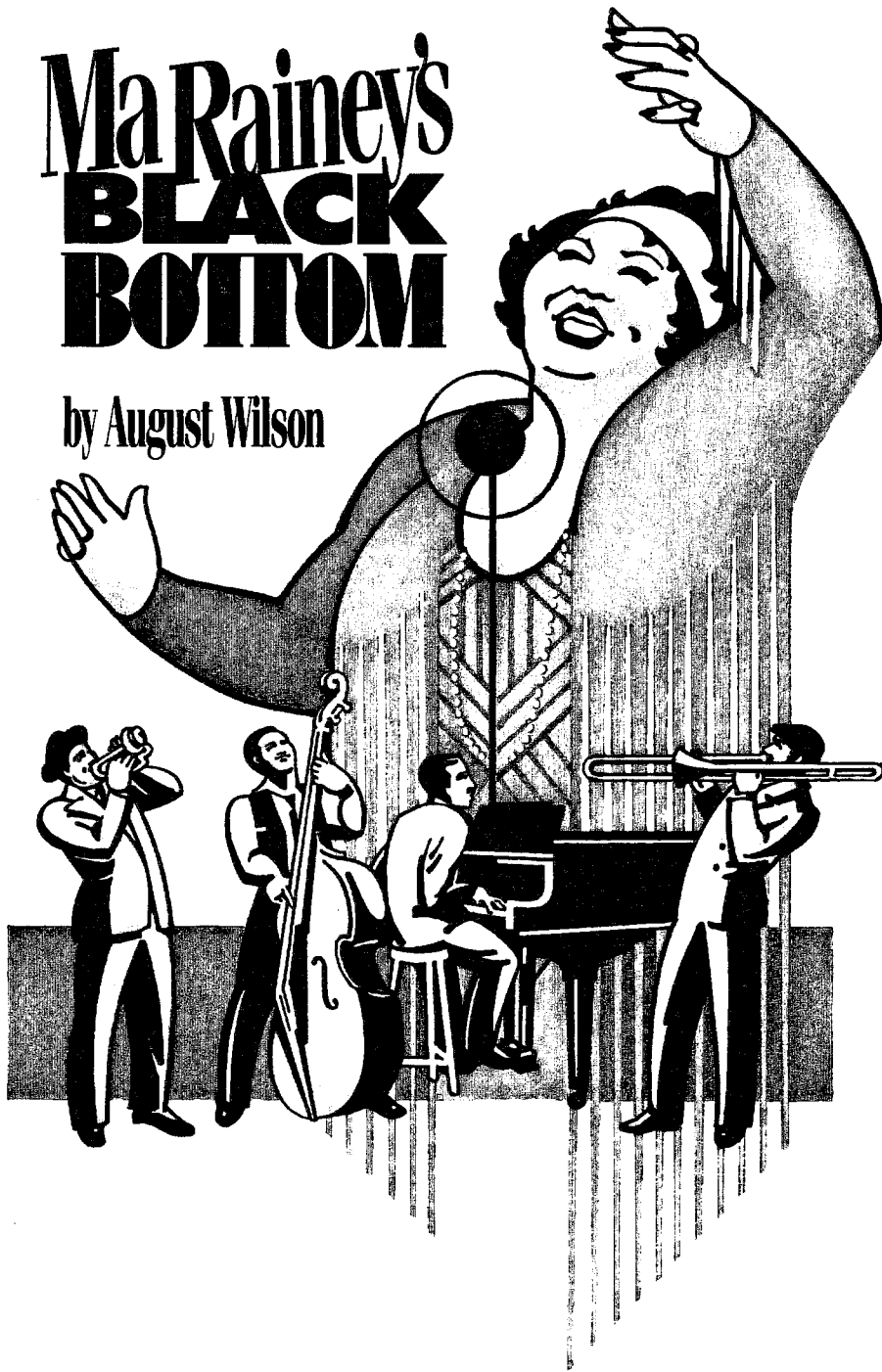
Sponsored by



Produced by special arrangement with Samuel French, Inc.

Ma Rainey's **BLACK BOTTOM**

by August Wilson



Pittsburgh Public Theater

Eighteenth Season 1992-93

Dan Fallon
Managing Director
Presents

Ma Rainey's **BLACK BOTTOM**

by August Wilson

Directed by Claude Purdy
Featuring

Thomas Martell Brimm
Renée Goldsberry
John Hall
Donald Marshall
Ron McClelland

Larry John Meyers
Sandra Reaves-Phillips
John Henry Redwood
Monté Russell
William Thunhurst

Set Design
Vicki Smith

Lighting Design
Phil Monat

Sound Design
James Capenos

Musical Director
Dwight Andrews

Costume Design
Paul Tazewell

Production Stage Manager
Julie Pyle

Assistant Stage Manager
Bret Torbeck

September 17 through November 1, 1992
at the Theodore L. Hazlett, Jr. Theatre

Ma Rainey's Black Bottom, by August Wilson, opened at the
Yale Repertory Theatre on April 6, 1984 under the direction of Lloyd Richards.

The Goodman Theatre

Miss Evers' Boys

by David Feldshuh
Beginning September 13

Twelfth Night

by William Shakespeare
Beginning January 10

On The Open Road

by Steve Tesich
Beginning March 6

The Good Person of Setzuan

by Bertolt Brecht
Beginning April 24

Riverview
A Melodrama with Music

by John Logan
Beginning June 12

Showbill

THE GOODMAN THEATRE OF
THE ART INSTITUTE OF CHICAGO
PRESENTS

A Chicago Theatre Group, Inc. production

ROBERT FALLS
ARTISTIC DIRECTOR

ROCHE SCHULFER
PRODUCING DIRECTOR

MISS EVERS' BOYS

BY
DAVID FELDSHUH

DIRECTED BY
KENNY LEON

SET DESIGN BY
MICHAEL OLICH

COSTUME DESIGN BY
SUSAN E. MICKEY

LIGHTING DESIGN BY
ROBERT PETERSON

SOUND DESIGNER, COMPOSER,
AND MUSIC DIRECTOR
DWIGHT ANDREWS

CHOREOGRAPHY BY
DARLENE BLACKBURN

PRODUCTION STAGE MANAGER
LOIS GRIFFING

STAGE MANAGER
JILL LARMETT

Miss Evers' Boys was originally produced by Center Stage, Baltimore, Maryland; Stan Wojewodski, Jr., Artistic Director; Peter W. Culman, Managing Director.

Subsequently produced by Center Theatre Group of Los Angeles at Mark Taper Forum; Gordon Davidson, Artistic Director; Stephen J. Albert, Managing Director.

This play was suggested by the book *Bad Blood* by James H. Jones (The Free Press, 1981) and by a number of primary sources including Senate testimony, medical articles, and field interviews conducted in Alabama in the 1930s. The Tuskegee Study was a grim reality and Professor Jones' book is recommended to all who desire a meticulously researched and reasoned review of it.

Miss Evers' Boys is fiction. Names have been changed, characters created, incidents devised and altered, and quotations from primary sources rearranged or paraphrased. *Miss Evers' Boys* is not presented, nor intended to be taken as a factual record of real events or real people.

Kraft General Foods is the principal sponsor of the student matinees
for Chicago public high school students.

The Goodman Theatre/Chicago Theatre Group, Inc. is a not-for-profit arts organization. Productions are made possible in part through the National Endowment for the Arts, the Illinois Arts Council, a CityArts IV Grant from the City of Chicago Department of Cultural Affairs, and the National Corporate Theatre Fund.

The
Goodman
Theatre

Showbill



THE GOODMAN THEATRE OF
THE ART INSTITUTE OF CHICAGO

PRESENTS

A Chicago Theatre Group, Inc. production

ROBERT FALLS
ARTISTIC DIRECTOR

ROCHE SCHULFER
PRODUCING DIRECTOR

PRODUCED IN ASSOCIATION WITH Yale Repertory Theatre

THE PIANO LESSON

BY AUGUST WILSON

DIRECTED BY
LLOYD RICHARDS

SET DESIGN BY E. DAVID COSIER, JR. COSTUME DESIGN BY CONSTANZA ROMERO LIGHTING DESIGN BY CHRISTOPHER AKERLIND

SOUND DESIGN J. SCOTT SERVHEEN MUSICAL DIRECTION AND ORIGINAL MUSIC COMPOSED BY DWIGHT ANDREWS

PRODUCTION STAGE MANAGER LOIS GRIFFING STAGE MANAGER KAREN L. CARPENTER

This production is sponsored by the Reader's Digest Dance and Theatre Program and a consortium of the following companies:

CONSORTIUM LEADERS—First Chicago; Johnson Publishing Company, Inc.; Telemat, Ltd.
CONSORTIUM MEMBERS—Allstate Insurance; Arthur Andersen & Co.; Bear Stearns & Company; Chicago Pacific; Donaldson, Lufkin & Jenrette; Firestone Trust Fund, a charitable trust of The Firestone Tire & Rubber Company; The First Boston Corporation; General Parking; Mayer, Brown & Platt; Mayfair Company; Metropolitan Structures; System Parking Inc.

The World Premiere of *The Piano Lesson* was presented in New Haven, Connecticut, at the Yale Repertory Theatre. Lloyd Richards, artistic director, and Benjamin Mordecai, managing director, and in Boston, Massachusetts, at the Huntington Theatre, Peter Altman, producing director, and Michael Maso, managing director.

The Goodman Theatre/Chicago Theatre Group, Inc. is a not-for-profit arts organization. Productions are made possible in part through the National Endowment for the Arts, CityArts, the Illinois Arts Council, and the National Corporate Theatre Fund.

The Goodman Theatre is a constituent of the Theatre Communications Group, Inc., the national service organization for nonprofit theaters; the League of Resident Theatres; the Illinois Arts Alliance and the American Arts Alliance; the League of Chicago Theatres; the Illinois Theatre Association; and the Chicago Dance Coalition.

PLAYBILL®

WALTER KERR THEATRE



OPENING NIGHT: APRIL 16, 1990

WALTER KERR THEATRE

A JUJAMCYN THEATER

JAMES H. BINGER
CHAIRMAN

ROCCO LANDESMAN
PRESIDENT

LLOYD RICHARDS
VALE REPERTORY THEATRE, CENTER THEATRE GROUP / AHMANSON THEATRE
GORDON DAVIDSON AND THE JUJAMCYN THEATERS
with BENJAMIN MORDECAI, EXECUTIVE PRODUCER
in association with
Eugene O'Neill Theatre Center, Huntington Theatre Company
Goodman Theatre and Old Globe Theatre

present

CHARLES S. DUTTON

in

THE PIANO LESSON

by

AUGUST WILSON

with

ROCKY CARROLL APRYL R. FOSTER
CARL GORDON LISA GAY HAMILTON
TOMMY HOLLIS S. EPATHA MERKERSON
and LOU MYERS as Wining Boy

scene design by E. DAVID COSIER, JR. lighting design by CHRISTOPHER AKERLIND costume design by CONSTANZA ROMERO

musical director / composer DWIGHT D. ANDREWS sound design G. THOMAS CLARK production stage manager KAREN L. CARPENTER

general manager LAUREL ANN WILSON casting MEG SIMON / FRAN KUMIN associate producer STEPHEN J. ALBERT

directed by

LLOYD RICHARDS

presented in New York in association with
the Manhattan Theatre Club

this production was originally mounted by
Yale Repertory Theatre and Huntington Theatre Company in
November 1987

The Producers wish to express their appreciation
to the Theatre Development Fund for its
support of this production

Atlanta Arts

THE MONTHLY MAGAZINE OF THE ROBERT W. WOODRUFF ARTS CENTER

FEBRUARY 1992

THE PIANO LESSON

BY August Wilson



DIRECTED BY KENNY LEON
JAN. 7 - FEB. 15, 1992

SPONSORED BY

NationsBank



KENNY LEON
Artistic Director

EDITH H. LOVE
Managing Director

presents

AUGUST WILSON'S THE PIANO LESSON

Directed by
KENNY LEON

Set Design by
MARJORIE KELLOGG

Costume Design by JUDY DEARING
Lighting Design by ANN G. WRIGHTSON

Composer
DWIGHT ANDREWS

Casting
JAY BINDER
ADAM MUZZY

Production Stage Manager
PAT A. FLORA

Sponsored by

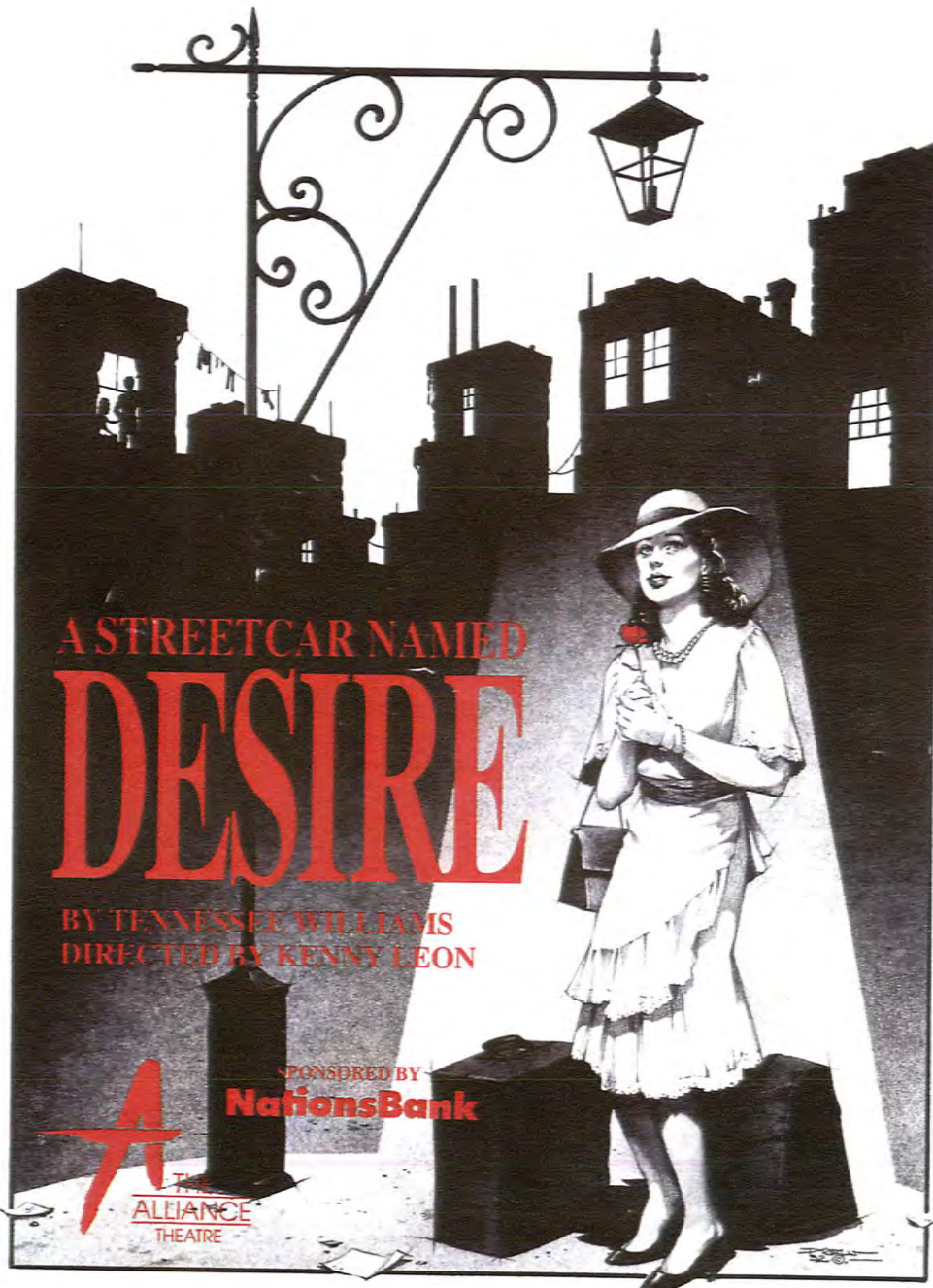
NationsBank

Produced by special arrangement with Samuel French, Inc.

Atlanta Arts

THE MONTHLY MAGAZINE OF THE ROBERT W. WOODRUFF ARTS CENTER

JANUARY 1993



JANUARY 6 - FEBRUARY 13, 1993



KENNY LEON
Artistic Director

EDITH H. LOVE
Managing Director

present

TENNESSEE WILLIAMS'
A STREETCAR NAMED DESIRE

Directed by
KENNY LEON

Set Design by
MARJORIE KELLOGG

Costume Design by
JUDY DEARING

Lighting Design by
ANN G. WRIGHTSON

Composer
DWIGHT ANDREWS

Casting
JAY BINDER
JODY FELDMAN

Production Stage Manager
PAT A. FLORA

Stage Manager
RICHARD FELDMAN

Sponsored by

NationsBank

Produced by special arrangement with Samuel French, Inc.



TWO TRAINS RUNNING

By AUGUST WILSON

Directed by KENNY LEON

October 13 – November 14, 1993



KENNY LEON
Artistic Director

EDITH H. LOVE
Managing Director

presents

TWO TRAINS RUNNING

By

AUGUST WILSON

Directed by

KENNY LEON

Set Design by
MARJORIE B. KELLOGG

Costume Design by
SUSAN E. MICKEY

Lighting Design by
ANN G. WRIGHTSON

Composer
DWIGHT ANDREWS

Casting
JAY BINDER
JODY FELDMAN

Production Stage Manager
PAT A. FLORA

Stage Manager
HORACENA J. TAYLOR